

INSTALLATION / OWNER'S MANUAL

for
Alaska Direct Vent System (ADV)

For Alaska Stoker Models:
Channing III RV, KC III RV, Liberty RV
Rear Vented Models

Note: Read all instructions thoroughly before attempting to install this vent system.

CAUTION!!

The Alaska Direct Vent System is designed for use only with the Alaska Stoker Stove to exhaust byproducts of combustion through a combustible wall to the exterior of a building. Do not use this vent system with any other appliances as it may cause injury or a house fire.

Do not operate this stove for an extended period of time with either the view door or ash door open, this will activate the safety switch and shut the stove down, other problems may also result.

Tested 4/01 TO UL 1482

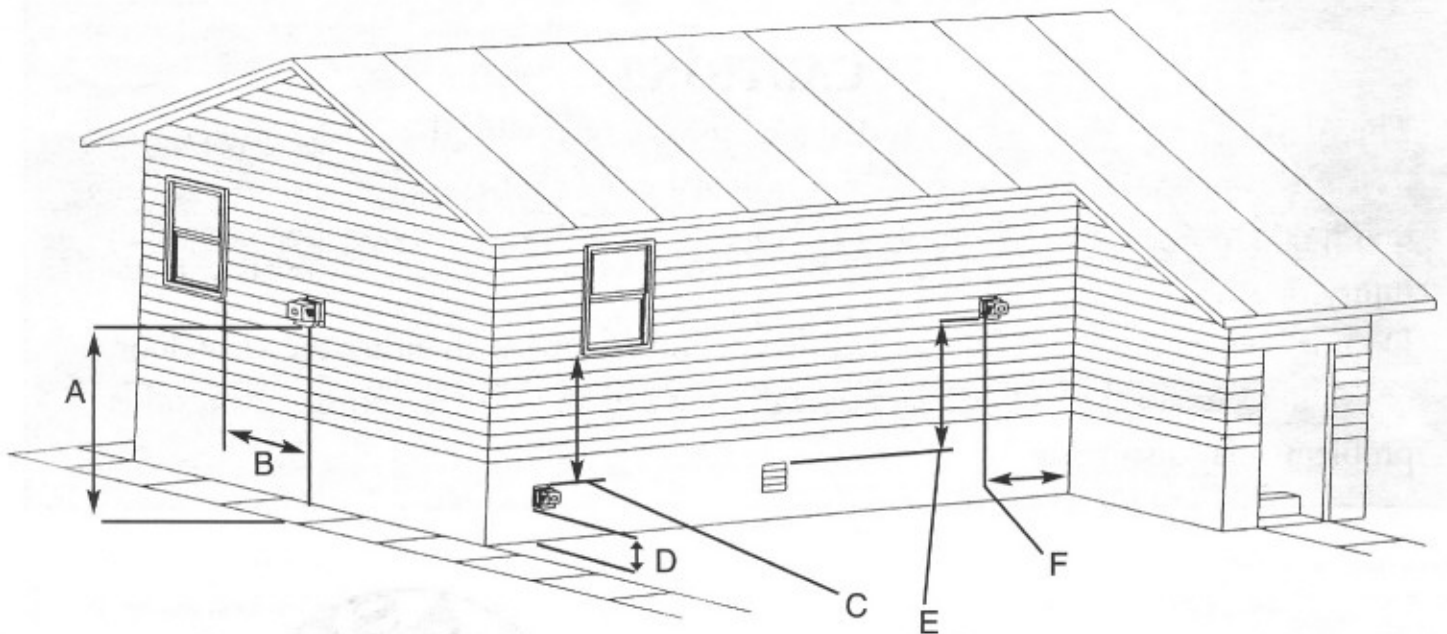
Conam Inspection Inc.
2 Millbury Street
Auburn, Massachusetts 01501 STL-002



Alaska Company, Inc.
3162 Columbia Blvd.,
Bloomsburg PA 17815

PLANNING THE VENT SYSTEM

- A. The exit termination of a mechanical draft system must not be less than 7' above grade when located adjacent to a public walkway.
- B. The vent termination of a Direct Vent or sealed combustion appliance with an input of 50,000 BTU's per hour or less must be located at least 9" from any opening through which vented gases could enter the building. With an input over 50,000 BTU's per hour, a 1' termination clearance is required. Another term for direct vent is sealed combustion.
- C. The venting system of a Direct Vent must exhaust at least 4' below any door or window or gravity air inlet into the building.
- D. The bottom of the vent terminal must be located at least 12" above finished grade.
- E. A venting system must terminate at least 3' above any forced air inlet located within 10'.
- F. The vent termination point must not be installed closer than 3' from an inside corner of an L-shaped structure.
- G. The vent termination should not be mounted directly above or within 3' horizontally from an oil tank vent or gas meter.



INSTALLING THE ALASKA DIRECT VENT SYSTEM

Caution: Before installing your stove and vent system, check all clearances and local codes. Take time to familiarize yourself with the stove and components. See stove manual for stove specifications.

Step 1: Assemble stove according to stove manual. Mount ADV Vent Housing on stove body as follows: Locate ADV Vent Housing, slide 6" pipe of vent housing over 6" pipe on bottom back of stove, then tighten the 2 bolts firmly.

Step 2: Place the 4"x24" pipe into the 4" hole of ADV Vent Housing. Position stove in desired location with pipe against wall where hole is to be cut for exhaust. Put a mark on wall around pipe, move stove. Find center of mark on wall cut an 8"x8" hole through wall centered with mark. (*Note: hole can be round*)

Step 3: Locate side wall vent hood and components. Insert vent hood through wall from outside, centering 6" tube in hole. Attach with four screws and then seal vent hood against house with caulking. **Note:** 6" outer tube of vent hood must extend through finished wall. To extend tube, cut a 6" piece of stove pipe to length, insert and attach with screws. Slide a trim ring over 6" tube of vent hood, attach to finished wall with screws. Position stove and cut 4" tube to length, attach to vent hood and stove with screws. Seal all seams with high-temperature silicone (*Be sure to allow at least 2" of space between back of hopper and flammable surface!*). Silicone around outside edge of crimp on 4" tube and attach with three screws to vent hood.

CAUTION: Make sure all joints are sealed with high-temperature silicone, and attached with screws!!

ADV PARTS

- 1 - ADV Vent Housing With Motor
- 1 - Side Wall Vent Hood
- 1 - ADV Manual
- 1 - 4" x 24" piece pipe
- 1 - Fume Switch
- 1 - Cleaning Brush

Step 4: Cord Connection

- A) Plug 5' male cord from feed system into female cord from fume switch.
- B) Plug male cord from fume switch into wall outlet.
- C) Plug male cord from ADV into triple plug on feed system of stove.
- D) Plug male cord from blower rheostat into remaining female end of triple plug (*see stove manual for information on rheostats*).

Note: If feed system does not operate, first check reset on fume switch, (*located on back center of switch*), using eraser on pencil, insert into hole and reset switch, (*switch must be cool to reset*).

CAUTION: Always make sure vent system is plugged in and operates before starting fire!

Important! Draft Adjustment

Make sure vent system is operating. Light stove according to stove manual. Remove Allen screw located at top side of stove. Insert draft meter into hole. Draft reading should read .03 to .04 in/w.c. (*See your dealer for information on draft meters*).

CAUTION! Always check draft reading. The length and configuration of vent pipe will vary draft reading.

MONTHLY MAINTENANCE

Vent system should be cleaned on a monthly basis. To clean system:

- 1) Unplug feed system and allow stove to cool. Use a well filtered vacuum cleaner (*Shop Vac*), and clean inside of stove body, also insert vacuum hose through hole in bottom back of stove and clean ADV box. Thoroughly clean fume switch tube with brush or vacuum. Replace ash pan and close ash door.
- 2) Unplug vent system and remove the 6-1/4" screws that hold motor in place, and remove motor from ADV Housing. Clean fan, housing and vent pipe with vacuum. Replace motor and screws. Locate vent hood on outside of house, remove four screws holding vent hood cover and remove. Clean pipe, replace cover.
- 3) **Test your fume switch!** This should be done two times during the burning season. Using a butane torch, hold the flame in the tube of the fume switch, (*inside back of stove*), with feed system running. Hold until the fume switch trips shutting down the feed system. If feed system does not shut off, **DO NOT OPERATE STOVE!** Contact your local dealer for replacement switch.

END OF YEAR MAINTENANCE

- 1) Remove stove pipe from vent housing and clean thoroughly. (**Make sure when pipe is assembled that ALL seams are sealed with high temperature silicone before operating stove again.**)
- 2) Remove motor, clean fan and ADV box. Clean stove according to manual.

ADV Warranty; See store manual warranty / electrical parts

TROUBLESHOOTING

Before you call your dealer, check the following

Problem	Possible Cause	Possible Solution
Feed system does not run.	Fume switch unplugged or fume switch needs to be reset.	Clean vent system thoroughly. Make sure doors are shut and sealed.
Vent system does not run.	Vent system not plugged into power source. Loose wires in junction box. Fume switch tripped.	Plug ADV cord into 110V outlet. Unplug unit remove junction box cover check for loose wires. Replace Motor. Reset Switch
Sulfur odor or CO alarm sounds.	Blocked exhaust wheel. Doors not shut on stove body. Vent system improperly sealed.	Unplug unit and clean entire vent system. Make sure vent hood is sealed to house. Seal all exhaust system seams with high temperature silicone. Close doors. Replace gasketing.